



# Acoustical Surfaces, Inc.

SOUNDPROOFING, ACOUSTICS, NOISE & VIBRATION CONTROL SPECIALISTS

123 Columbia Court North • Suite 201 • Chaska, MN 55318  
(952) 448-5300 • Fax (952) 448-2613 • (800) 448-0121

Email: [sales@acousticalsurfaces.com](mailto:sales@acousticalsurfaces.com)  
Visit our Website: [www.acousticalsurfaces.com](http://www.acousticalsurfaces.com)

---

---

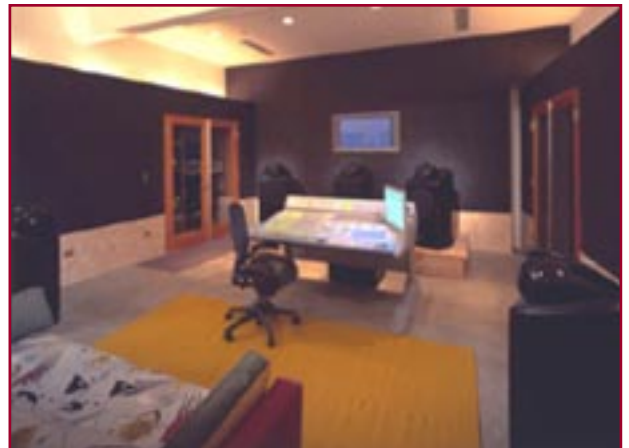
We Identify and **S.T.O.P.** Your Noise Problems

## Botnick's Unit Eye

*Studio bau:ton Design Opens Doors to Imagination*

When Bruce Botnick, famed 'Doors' engineer, scoring mixer par excellence and leading surround sound pioneer, moved to Ojai from Los Angeles, he needed his own first-class studio.

studio bau:ton was called in to design a personal studio, to the exacting standards of the seasoned sound professional, in an existing commercial space. Bruce had previously enjoyed working at Fox's Newman Scoring Stage (an earlier studio bau:ton design). Also, principal architect Peter Grueneisen had been involved in the renovation of Bruce and Marie Botnick's Richard Neutra house in LA.



Completed in mid-2004, UnitEye, a word play on the facilities address, is indeed stunning to look at, but it is primarily designed for the ears. Five free standing Nautilus speakers and a subwoofer are positioned around a Digidesign Icon console for a permanent 5.1 surround setup. The large space and plentiful ceiling height facilitated ideal room proportions, and no compromises were needed to lay out a generous facility, tailored to the needs and preferences of its owner. Bass traps and curtains control the sound throughout the space, while indirect and recessed lighting and a flush mounted flat panel video monitor tie together the visual aspects of multi-media production.

A wide skylight, which allows natural daylight into the room, focuses the calm environment inside the main studio space, without creating glare or heat gain. [A friendly atmosphere is created by applying Echo Elinimator™ and Sound Silencer™ panels, environmentally friendly alternatives to fabric and fiberglass. A polished concrete floor with rugs and wooden oriented strand board wall panels complete the picture. \(For more information on Echo Elinimator™ and Sound Silencer™ or other acoustical products contact Acoustical Surfaces Inc. 1-800-448-0121 Website: \[www.acousticalsurfaces.com\]\(http://www.acousticalsurfaces.com\) and e-mail: \[sales@acousticalsurfaces.com\]\(mailto:sales@acousticalsurfaces.com\)\).](#)

The client area in the back features comfortable seating and bookshelves built into the rear wall, all supervised by the inscrutable Robby the Robot, the giant science fiction character from Forbidden Planet, looking on from the corner. Outside the studio, a kitchen, bathroom and lounge area and a mezzanine utilize the remaining space, forming a complete and comfortable working environment.

Engineer/Producer and LA native Bruce Botnick's illustrious list of credits is a testament to just how influential Los Angeles has been in shaping popular music in this past half century. In a career that began in the mid-60s, Botnick has had his hand in some of rock's finest hours, including the Doors (LA Woman), Eddie Money, Kenny Loggins; movies such as ET, Star Trek First Contact, Air Force One, Basic Instinct, Aladdin, Total Recall, Mulan and many others. Bruce is in the process of remixing the entire Doors catalog for DVD-Audio.

Studio bau:ton has recently completed personal studio facilities for the Dave Matthews Band, its drummer Carter Beauford, French composer Eric Levi, actor/musician Will Smith; as well as screening rooms for The Walt Disney Company in Paris and Amsterdam, and a post-production facility expansion for Warner Brothers' The Idea Place in Burbank.